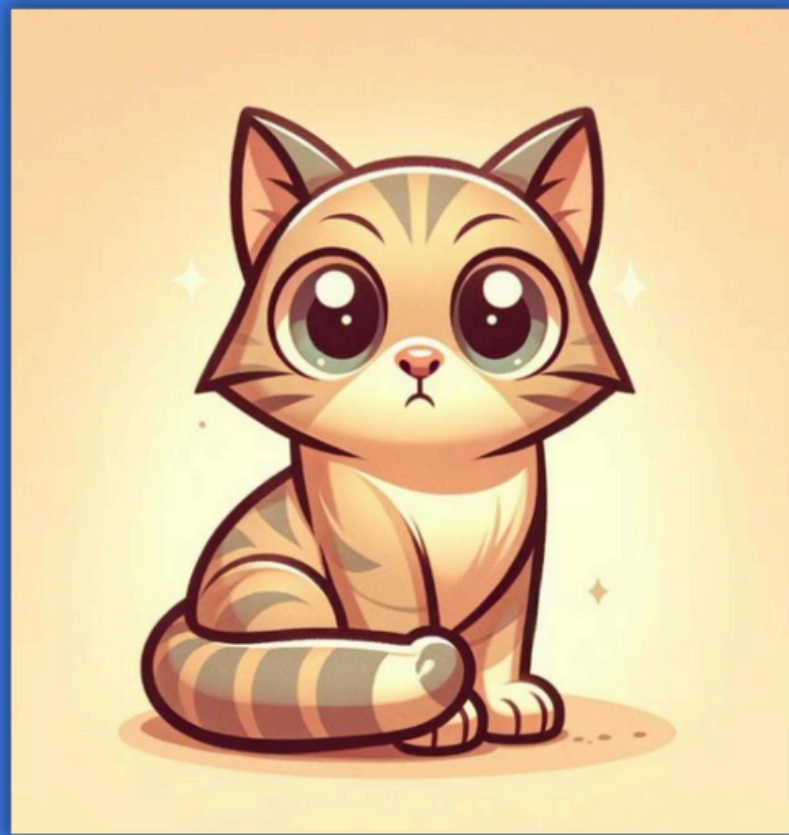


# MY GENAI COMPANION!

Selecting one of the two options for each of the four areas in the **Foresee Framework - Confidence, Competence, Criticality and Context** - will provide you with one of 16 unique combinations of characteristics related to your holistic position on **Generative AI**, which can be used to help you reflect on how this might impact your work and professional identity moving forward, identify any development needs you feel you might have in relation to this technology, and consider where your stance on **GenAI** fits within the context of the wider team or organisation you work within.

As a starting point, check out the next section of this guide, which will show you what your **GenAI Companion** is, based on the unique combination of responses you have selected in relation to the **Foresee Framework** - see what you think!

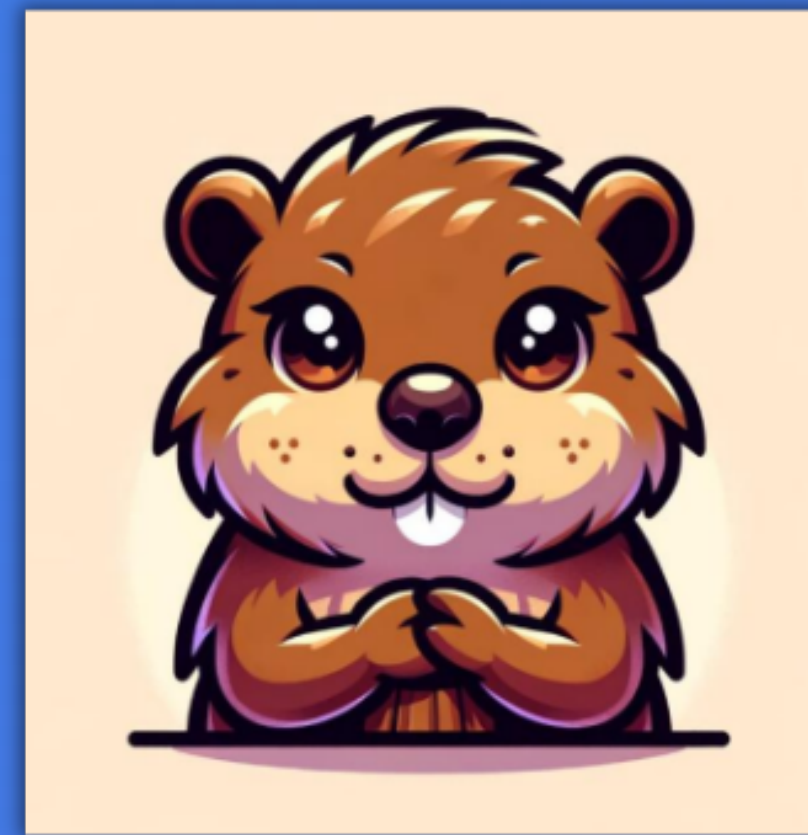




## ***The Cautious Cat***

*Cautious - Novice - Sceptical - Limited*

Cats are known for their cautious and curious nature, exploring their surroundings with careful consideration. You approach generative AI cautiously, acknowledging your novice skills. Sceptical about its implications, you foresee limited influence on your current work position and career path.



## ***The Attentive Beaver***

*Cautious - Novice - Sceptical - Significant*

Beavers are pioneers in constructing their intricate dams, displaying diligent yet pioneering behaviour. Taking a cautious stance, your novice skills align with a sceptical outlook. Despite scepticism, you anticipate significant influence on your work position and career paths.



## ***The Tootling Turtle***

*Cautious - Novice - Embracing - Limited*

Turtles are known for their slow exploration, representing a tentative yet steadfast approach. Exploring generative AI cautiously with novice skills, you embrace its potential. However, you foresee limited influence on your current work position and career path.



## ***The Open Octopus***

*Cautious - Novice - Embracing - Significant*

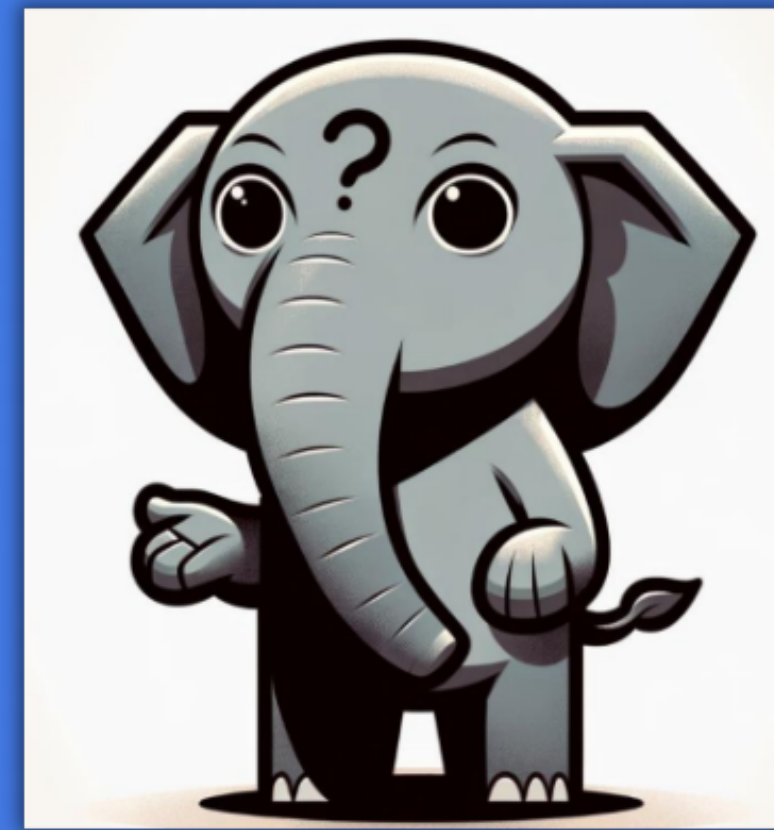
Octopuses explore the depths of the ocean with a free mind, aligning exploration and a curious approach. Cautiously embracing generative AI with novice skills, you maintain an open and positive attitude. Expecting significant influence, you actively explore its benefits.



## ***The Sceptical Fox***

*Cautious - Advanced - Sceptical - Limited*

Foxes are clever and known for their hesitant behaviour, questioning their surroundings with a cautious approach. With advanced skills, you approach generative AI cautiously, questioning its implications. Anticipating limited influence, you maintain a reserved outlook.



## ***The Questioning Elephant***

*Cautious - Advanced - Sceptical - Significant*

Elephants, wise and cautious, embody suspicions of all things they do not know while navigating their surroundings with expertise. Proficient with advanced skills, you remain cautious and sceptical about generative AI. Despite reservations, you predict significant influence on your work and career.



## ***The Cautious Koala***

Cautious - Advanced - Embracing - Limited

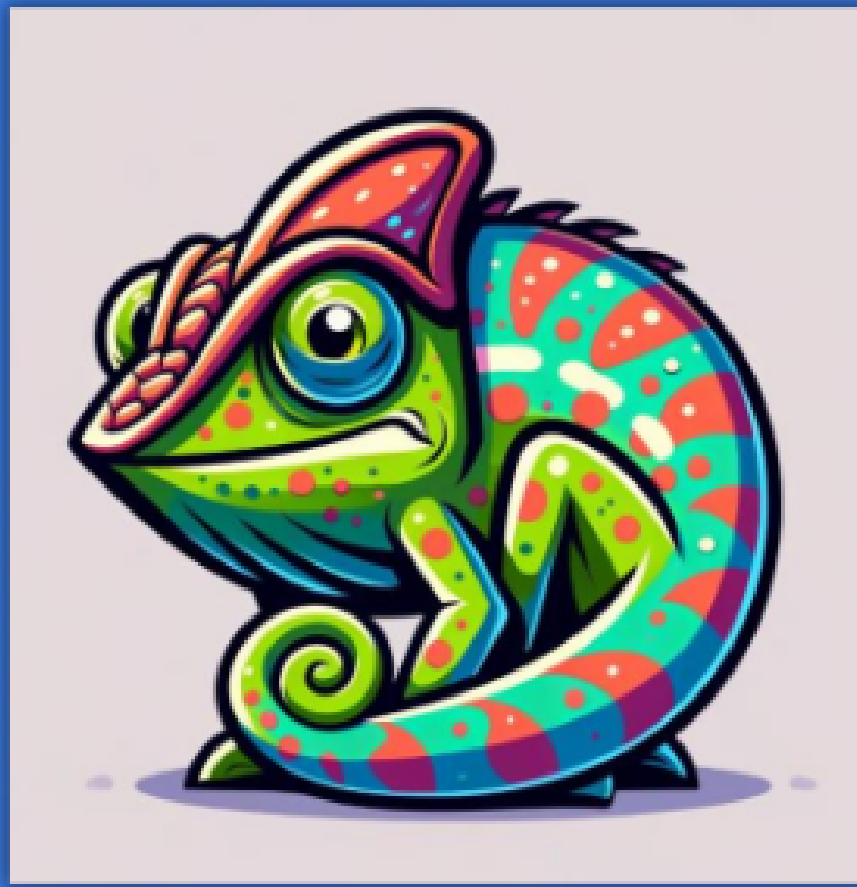
Koalas are cautious climbers, although they exude expertise in navigating their environment with care. They are also not averse to the occasional snooze to mull things over. Despite advanced skills, you approach generative AI cautiously. Embracing its potential, you predict limited influence on your current work position and career.



## ***The Exploring Eagle***

Cautious - Advanced - Embracing - Significant

Eagles, known for their expertise in soaring through the skies, embody an adventurous approach combined with climbing high to see the wood for the trees. Proficient with advanced skills, you cautiously embrace generative AI's potential. Expecting significant influence, you actively explore its benefits.



## ***The Confident Chameleon***

*Confident - Novice - Sceptical - Limited*

Chameleons, despite being in new and varied environments, exude confidence and above all adaptability. Feeling confident despite novice skills, you maintain scepticism toward generative AI and expecting limited influence, you approach its usage with care.



## ***The Bold Bison***

*Confident - Novice - Sceptical - Significant*

The Bison is bold and pragmatic in their actions but can remain headstrong and unconvinced until something proves its worth. Confident despite novice skills, you hold a sceptical view on generative AI. Anticipating significant influence, you navigate with caution.



## ***The Composed Cheetah***

*Confident - Novice - Embracing - Limited*

Cheetahs, confident and fast explorers even in the face of new tasks, symbolize a swift and positive approach to their actions. Confident with novice skills, you actively embrace generative AI. However, you foresee limited influence on your current work position and career.



## ***The Championing Coyote***

*Confident - Novice - Embracing - Significant*

The Coyote is one of the most adaptable and skilled survivors in the animal kingdom embodying intelligence and curiosity, even if they are a novice at tasks. Feeling confident with novice skills, you enthusiastically embrace generative AI. Expecting significant influence, you enjoy exploring its potential.



## ***The Careful Crow***

*Confident - Advanced - Sceptical - Limited*

Crows, confident and sceptical, display intelligence while approaching situations with caution. Confident and proficient with advanced skills, however this is balanced with a scepticism toward generative AI and its impact.



## ***The Adept Armadillo***

*Confident - Advanced - Sceptical - Significant*

Armadillos, adept and cautious, symbolize skilful navigation in the face of doubt. Confident with advanced skills, you still hold a sceptical view on generative AI and its impact. Despite scepticism, you foresee significant influence and navigate this adeptly.





## ***The Maestro Mountain Lion***

*Confident - Advanced - Embracing - Limited*

Mountain lions, confident and expert explorers, represent a combination of confidence and expertise. Confident with advanced skills, you embrace generative AI. However, expecting limited influence, you remain to be convinced of its significance towards your current situation.



## ***The Optimistic Owl***

*Confident - Advanced - Embracing - Significant*

Owls, wise and optimistic, embody expertise while maintaining an observant outlook.

Confident and proficient, you enthusiastically embrace generative AI. Anticipating significant influence, you navigate with expertise and optimism.